

InCu-VIEW Live™
In vitro Live Cell Imaging

Multi Cell-Imaging Incubator

- 'All-in-one' multi-gas incubator with integrated optical microscope
- Culture, observation and time-lapse recording of cells and embryos under controlled environmental conditions
- No need to remove samples for observation
- Record multiple samples and viewing points
- Reduced risk of contamination



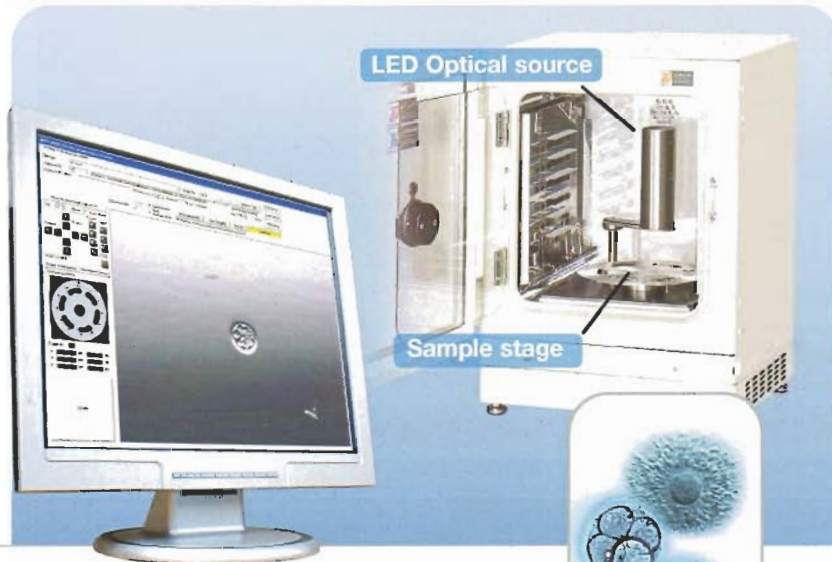
InCu-VIEW Live™

In vitro Live Cell Imaging

Observation and recording of embryos and cells - in culture.

InCu-VIEW Live™ is a Multi Cell-Imaging Incubator with an integrated optical microscope for the culture, observation and time-lapse recording of embryos and cells. Samples are maintained under tightly controlled environmental conditions with reduced risk of contamination. The integrated design eliminates the need to remove cell cultures or embryos from the incubator for observation and all microscope operations are controlled remotely minimising the number of door openings.

- SANYO 49 litre Multi-gas (CO₂/N₂/O₂) Incubator provides a precise and stable culture environment.
- Integrated Olympus microscope with a choice of phase contrast or relief contrast optics for optimal sample imaging.
- Observe and record embryo or cell development with simultaneous time-lapse recording of up to 12 samples with 10 viewing points per sample.
- Embryo tracking automatically re-aligns stage position to follow embryo movement.
- 10x Objective provides approx. 250x enlarged image when displayed on a 17" monitor.
- 0.1W White LED optical source does not effect temperature control. The light source is only on during image capture minimising exposure for cells or embryos.



- High-precision motorised stage accommodates most commonly used culture dishes and flasks with no disturbance to samples.
- MTR Software provides easy set-up and automated operation including auto-focus, fixed point observation, analysis and time-lapse recording. Sample and culture parameters are also recorded.

Applications

- **IVF and Embryology**
- **Stem Cells**
- **Regenerative Medicine**
- **Cell Culture**
- **Toxicology and Comparative Studies**

Jointly developed with Olympus Co., Ltd.

The information contained in this brochure is correct at the time of printing, but is subject to change without notice. E & O E. All orders are accepted subject to our current Terms and Conditions of Sale, copies of which are available on request.

UK Office

9 The Office Village
North Road, Loughborough
Leicestershire LE11 1QJ
United Kingdom
Tel: +44(0)1509 265265
Fax: +44(0)1509 269770
Email: sanyo@sanyo-biomedical.co.uk
www: www.sanyo-biomedical.co.uk

Head Office

Nijverheidsweg 120
4879 AZ Etten Leur
The Netherlands
Tel: +31 (0)76 543 38 33
Fax: +31 (0)76 541 37 32
Email: welcome@sanyo-biomedical.nl
www: www.sanyo-biomedical.com

France Office

44, avenue de Valvins, BP 44
F-77212 Avon Cedex
France
Tel: +33 1 60719911
Fax: +33 1 60711693
Email: sanyo@wanadoo.fr

SANYO

SANYO E&E Europe BV
Medical Division
Biomedical Business Unit

©2007 SANYO E&E Europe BV
Publication Number: 21451